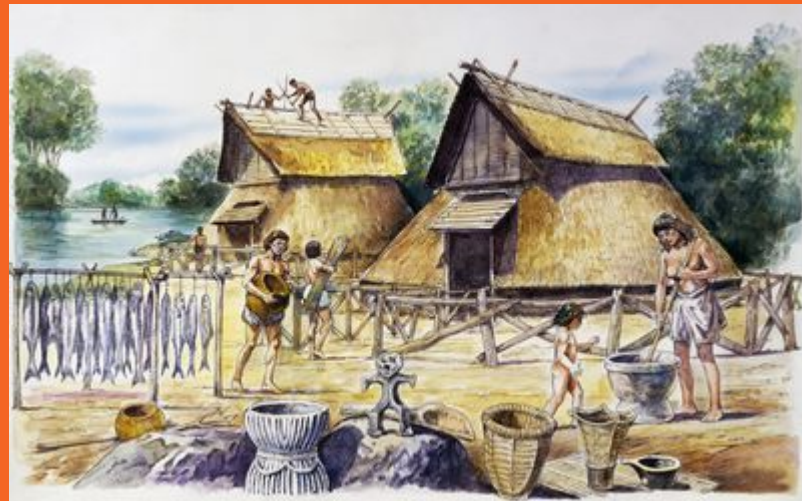


---

# Japanese Period History – Learning Stations



Jomon Period to the Edo Period

---

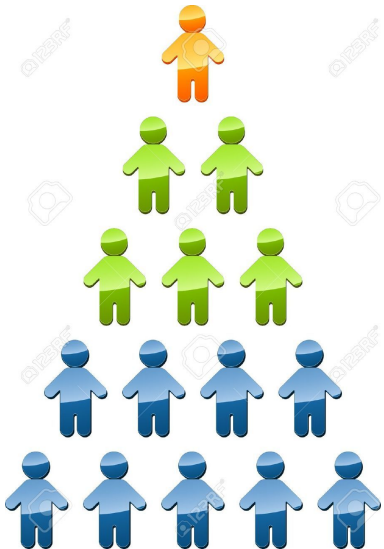


# PERSIA

When moving between the different learning stations keep PERSIA in your mind when taking notes.



- Political
  - Forms of government
- Economic
  - Trade, Labour, Agriculture
- Religious
  - What do people believe in?
- Social
  - Are there social classes? Status of women? Lifestyles
- Interactions
  - How to humans interact with the environment? Migration? Settlements?
- Artistic
  - Education? Art, music, literature, architecture





# What can infer about life in Jomon, Yayoi and Kofun Japan from the following images

These time periods are so long ago that written records are limited or, in the case of the Jomon period non-existent. So how can we find out about life during these time periods?

Answer: Artefacts!

Artefacts are man-made items. Archaeologists dig up different artefacts and then we can make inferences about what life was like.

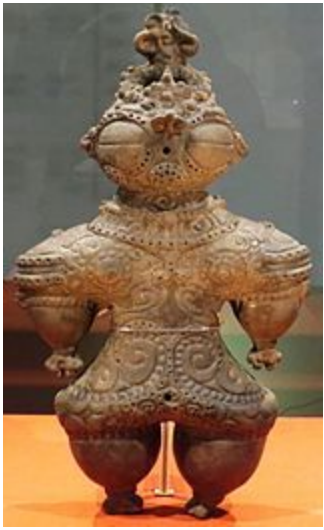
Example, the discovery of a skeleton with a ceremonial dagger and ornamental beads would tell us that possibly the civilization under study believed in the afterlife.

---

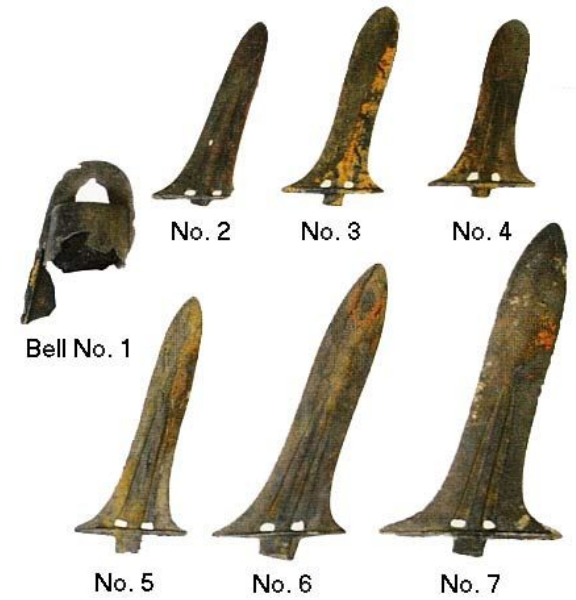


---

# Jomon Japan Images



# Yayoi Japan Images



---

# Kofun Japan Images

